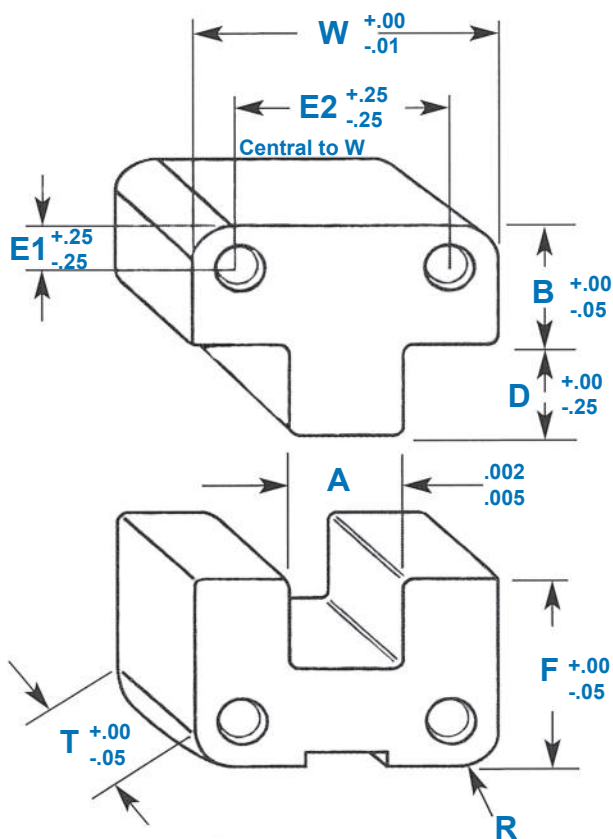


Metric Side Locks

"Gold" Series



Interchangeable
with Progressive®
"SLM" Series

Female Side Lock

- Manufactured from A-2 Steel
- Hardened to 58-60 Rc
- Titanium Nitrite Plating (Surface to 80 Rc)
- Excellent Wear Resistance
- Notched for easy removal

- Provides positive, accurate alignment of mold halves prior to mold closing.
- The lubricating properties of the (TIN) treatment combined with the qualities of the graphitic tool steel provide a reliably smooth acting and long lasting locking system
- Will not seize under thermal expansion
- Special sizes made to your requirements

Male Side Lock

- Manufactured from Graphite O-6 Steel
- Hardened to 58-60 Rc
- Black Oxide Finish
- Thickness is relieved on male insert past the parting line
- Greased Grooves

W	T	A	B	D	Overall Height	E1	E2	F	Machine Radius	SHCS (4)	Catalog Number
50	16	17	21.5	12	43	11	34	21.5	5	M6-1.0 X 18	MSL16X50
75	19	25	36	17	72	18	50	36	5	M10-1.5 X 20	MSL19X75
100	19	35	45	23	90	22	70	45	5	M10-1.5 X 20	MSL19X100

Progressive® and PCS® are the property of their respective companies

Note: Side Locks are sold in Male/Female sets only
Self-locking screws included