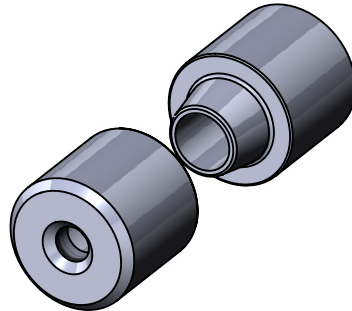


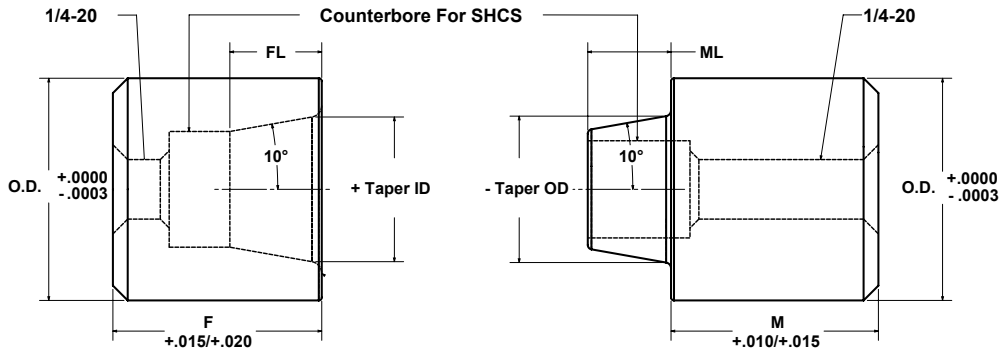
# ROUND TAPERED INTERLOCKS WITH COUNTERBORE

# NEW

- Ensures positive alignment between mold halves
- All sizes in stock for immediate delivery
- Hardened & Precision Ground/Finished
- Extra stock for precision fitting
- 52100 Bearing Steel
- Female 60 - 63 R/C
- Male 60 - 63 R/C
- Laser Marked



- **SPECIAL DESIGN WITH DRILL & COUNTERBORE FOR OPTIONAL FRONT/PARTING LINE INSTALLATION!**
- **IDEAL SUBSTITUTION FOR LEADER PINS & BUSHINGS FOR BLOW MOLD TOOLING**
- **PROUDLY MADE IN MICHIGAN BY CHOICE COMPONENTS**



## FEMALE

OD	Taper ID	SHCS Size	Taper Length FL	Female Length F	Catalog Number
3/4	1/2	10/24 or 10/32	1/4	11/16	RTF0611-10C
				7/8	RTF0614-10C
				1-3/16	RTF0619-10C
				1-3/8	RTF0622-10C
1	5/8	10/24 or 10/32	9/32	11/16	RTF0811-10C
				7/8	RTF0814-10C
				1-3/16	RTF0819-10C
				1-3/8	RTF0822-10C

## MALE

OD	Taper OD	SHCS Size	Taper Length	Male Length	Catalog Number
			ML	M	
3/4	1/2	10/24 or 10/32	9/32	11/16	RTM0611-10C
				7/8	RTM0614-10C
				1-3/16	RTM0619-10C
				1-3/8	RTM0622-10C
1	5/8	10/24 or 10/32	11/32	11/16	RTM0811-10C
				7/8	RTM0814-10C
				1-3/16	RTM0819-10C
				1-3/8	RTM0822-10C

**Also Available - Custom Taper Locks manufactured to your specifications**



Choice Mold Components, Inc.  
44347 Reynolds Drive  
Clinton Township, MI 48036

Website: [choicemold.com](http://choicemold.com)  
Phone: 800-425-3171  
Fax: 800-425-3177